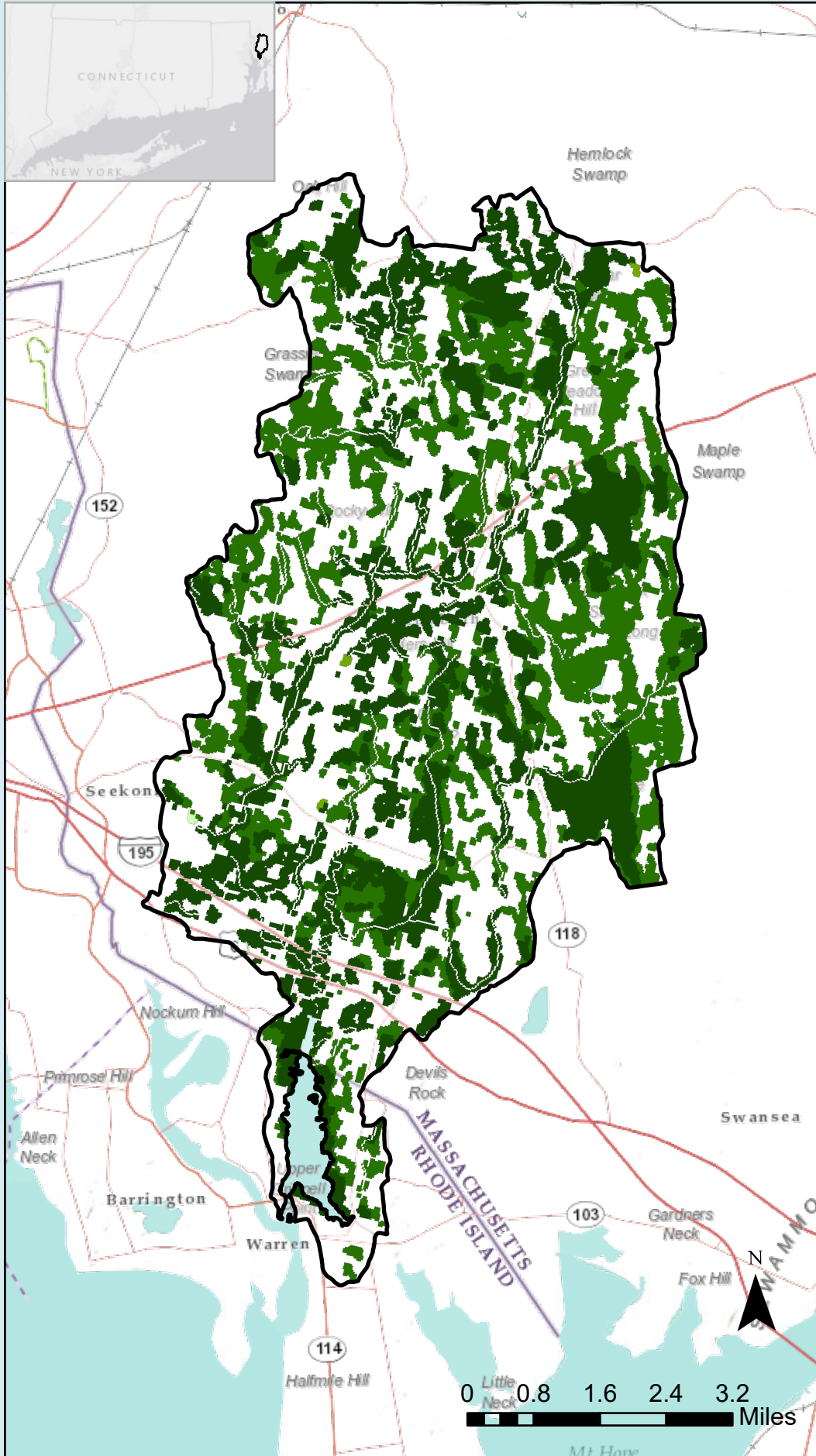


Nitrogen Removal Efficiency

Palmer River Watershed (HUC 12)

Nitrogen Removal Efficiency (NRE, range 0 to 80%) is the estimated percentage of N removed within three types of landscape N sinks – wetlands, streams and ponds.

These estimates make use of peer-reviewed published N removal ranges, as well as physical characteristics of each sink that influence residence time. These landscape N sinks are color coded, with darker colors denoting higher NRE and lighter colors denoting lower NRE. N removal estimates use hydrologic data from NHDPlus V2, land cover data from NLCD (2016, 30 m) and soils data from SSURGO.



Nitrogen Removal Efficiency

0 - 20% (no color)

20 - 40%

40 - 60%

60 - 80%

80 - 100%